

TechOnTip Weblog

Run book for Technocrats

HOME ABOUT US CONTACT DIRECT ACCESS MUSIC

Recent Posts

SAML vs OAuth 2.0
ADFS SAML Claim:
Windows Domain
Name (NetBIOS)
Replacing legacy Domain
Controller Certificates
Get child objects thru
ADSI & Powershell
Active Directory
LDAP filters

Articles

About Us
Life
Travel
Contact
Announcement
Music
Silk Route
Direct Access

Categories

Active Directory User
Management (4)
ADFS (7)
Amazon EC2 (1)
Azure (1)
BackupExec 2010 (5)
BackupExec2010R3 (2)
Blackberry (2)
CISCO VOIP (1)
Citrix XenDesktop (1)
Claim Based
Authentication (1)
Clustering (3)
Database (2)
Deduplication (1)
DELL HD3000i (3)
DELL OEM (4)
Direct Access (14)
EMC Storage (5)
EMC VNX (3)
Enterprise IT
Consolidation (1)
exchange 2010 (1)
Exchange2007 (6)
Exchange2010 (10)
Hyper-V (3)
IIS (9)
IP-SAN (6)
IPv6 (4)
Microsoft CRM (4)
Mix & Match (80)
MS CRM 4.0 (4)
MsClustering (4)
MsFailoverClustering (7)
MsHyper-V (16)
Network (1)
NetworkLoadBalancing
(1)
Powershell (21)
Remote Access (1)
SaaS (1)
server sizing (1)
ServerVirtualisation (4)
Sharepoint (2)
Software as a service (1)
SQL 2008 (2)
Storage (7)
Tools (5)
VBScripting (1)
vDR (1)
Virtual Desktop Solution
(3)
VMware (9)
VNX5300 (1)
Windows 2012 (10)
Windows 8 (1)
Windows Storage Server
2008 (2)
WindowsServer (13)
WindowsStorageServer2
008 (5)

Archives

May 2017 (1)
March 2017 (1)
January 2017 (2)
October 2016 (2)
September 2016 (2)
August 2016 (2)
July 2016 (1)
June 2016 (1)
May 2016 (3)
April 2016 (2)
March 2016 (3)
February 2016 (2)
January 2016 (2)
November 2015 (2)
October 2015 (1)
June 2015 (2)
May 2015 (2)
April 2015 (2)
January 2015 (1)
December 2014 (3)
November 2014 (2)
October 2014 (1)
August 2014 (1)
July 2014 (3)
June 2014 (1)
April 2014 (1)
March 2014 (1)
February 2014 (7)
January 2014 (2)
December 2013 (1)
November 2013 (1)
October 2013 (3)
September 2013 (1)
June 2013 (2)
April 2013 (5)
March 2013 (4)
February 2013 (3)
January 2013 (10)
December 2012 (5)
November 2012 (1)
October 2012 (5)
September 2012 (7)
July 2012 (8)
June 2012 (7)
April 2012 (8)
March 2012 (3)
February 2012 (1)
December 2011 (1)
November 2011 (1)
October 2011 (4)
September 2011 (2)

« How to configure multiple IIS websites to access using host headers?

How to make sure internal certificate authority is supporting SAN certificate feature? »

How to create a SAN certificate signing request for IIS web server?

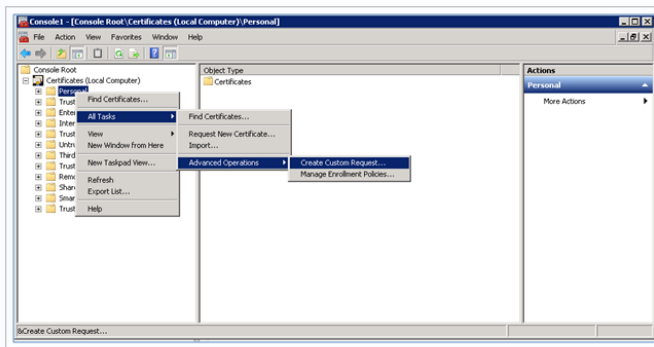
Posted by Brajesh Panda on June 6, 2011

SAN Certificate for IIS 7.5 Web Servers – Part 2

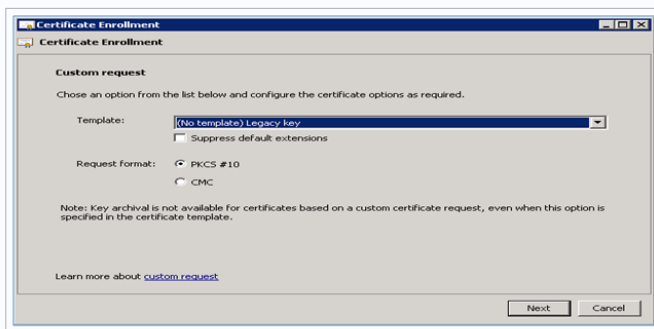
- [How to configure multiple websites to access using host headers?](#)
- [How to create a certificate signing request for our IIS web server?](#)
- [How to make sure internal certificate authority is supporting SAN certificate feature?](#)
- [How to generate SAN certificate from internal Windows 2003 certificate authority?](#)
- [How to configure/import SAN certificate in IIS 7.x?](#)

How to create a SAN certificate signing request for IIS web server?

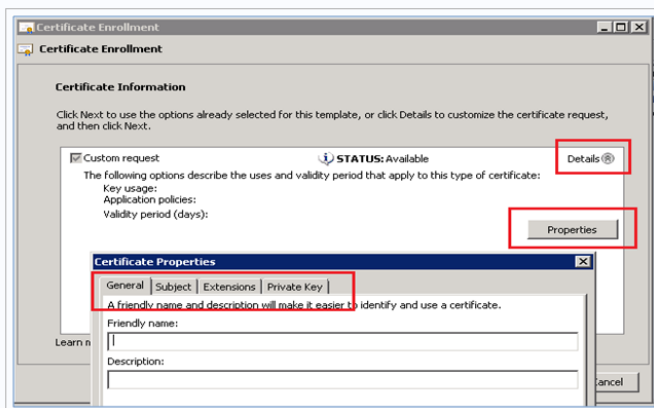
- Open Certificate MMC snap in for your computer
 - Click on Start – Run – MMC – File – Add/Remove Snap In – Select Certificates – Click Add – Select My Computer
- Click on Personal – All Tasks – Advanced Operations – Create Custom request



- Click next in Certificate Enrollment Wizard's welcome window
- Select "Proceed without enrollment policy" under Custom Request & click next
- In Custom Request window Select **(No template) Legacy key & PKCS #10** as request format
- And Click Next



- In Certificate Information Page click the **Details** icon then **Properties**. It will open up **Certificate Properties** window, where we can define different attributes.



- Under **Private Key**, select **key size**. Over here I just left it as default. You may like to select 4096 for production servers.
- Under Key Type select "Exchange"



Search

Subscribe

Entries (RSS)

Comments (RSS)

Email Subscription

Join 116 other followers

Enter your email address

Sign me up!

Blog Hits

00955795

Automation

Powershell @ Technet
Powershell Tip
Powershell.COM

Control Panel

Log In
Log Out
Sign Up

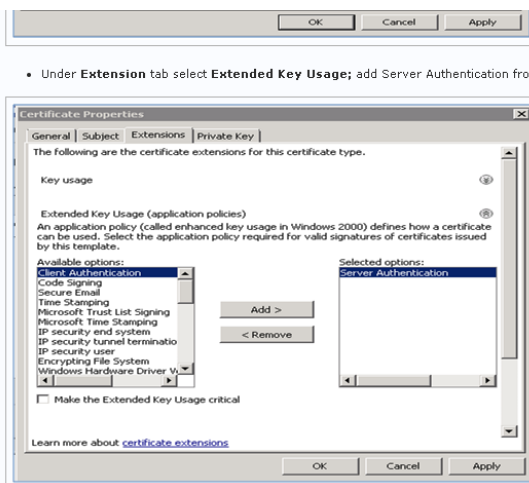
Favorite Blogs

Exchnage Geek – Milind
How Exchange Works
Virtualization Info

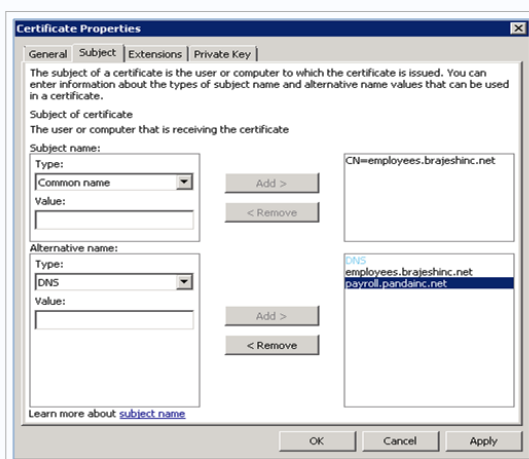
Helpful Links

CIDR
Intel VT-x Supported
Proc
Office 365 Roadmap
Office365 KB Articles
SendSPAMMailsForTestin
g
SendSpooMailForTesting
SPF Validation
UltraTools
Windows 2008R2 Event
IDS

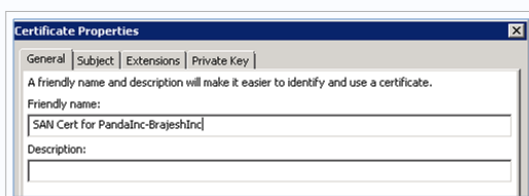
September 2011 (6)
 August 2011 (1)
 July 2011 (13)
 June 2011 (9)
 May 2011 (9)
 April 2011 (7)
 March 2011 (1)
 February 2011 (1)
 December 2010 (1)
 November 2010 (4)
 October 2010 (3)
 September 2010 (7)
 August 2010 (3)
 July 2010 (1)
 June 2010 (6)
 May 2010 (6)
 April 2010 (2)
 March 2010 (13)
 February 2010 (4)
 January 2010 (6)
 December 2009 (9)



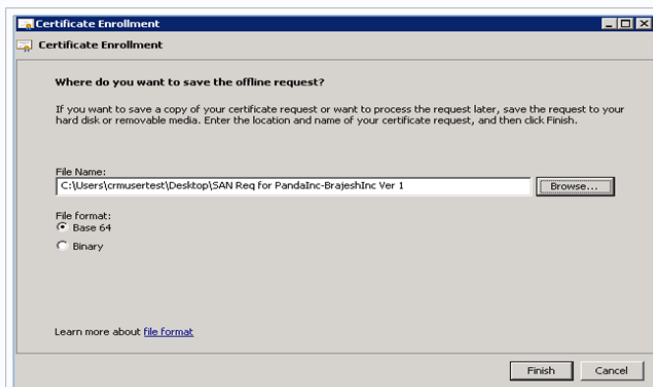
- Under **Extension** tab select **Extended Key Usage**; add Server Authentication from the available options.
- Under **Subject** Tab we will be defining our multiple DNS names for the certificate
- From Drop down **Subnet Name** section select **Common Name** & type the value. Preferably the primary domain name & then click Add.
- Under **Alternative Name** select **DNS** type all alternate DNS Names & add them.



- Under **General** Tab type a **friendly name**.
- Better to keep add a * in front of the friendly name now. It will help you to bind the certificate from IIS graphical user interface to all websites using same IP & port 443. If you don't do this now, no worries, you can do it later or you can use Commandline tool to bind this cert. I have discussed the same in [certificate installation/import post](#).*
- Click okay & In certificate information window click next



- Give a file path to save this certificate request 7 select Base 64 as file format



- It will generate ".req" file, you can open this file using notepad.
- You use this file to generate your SAN certificate from external public certificate authority or from your internal certificate authority server.

Advertisements



Rate this:

★★★★★ 7 Votes

Share this:

LinkedIn

Facebook

Twitter

Print

More

Like

Be the first to like this.

Related

- How to configure/import SAN certificate in IIS 7.x?
In "IIS"
- How to generate SAN certificate from internal Windows 2003 certificate authority?
In "IIS"
- How to configure multiple IIS websites to access using host headers?
In "IIS"

This entry was posted on June 6, 2011 at 2:00 pm and is filed under IIS. Tagged: SAN Certificate Request from Windows MMC. You can follow any responses to this entry through the RSS 2.0 feed. You can leave a response, or trackback from your own site.

39 Responses to "How to create a SAN certificate signing request for IIS web server?"

1.

How To Make Sure Internal Certificate Authority Is Supporting SAN Certificate Feature? « TechOnTip Weblog said

June 6, 2011 at 2:07 pm

[...] How to create a SAN certificate signing request for IIS web server? [...]

Reply
2.

How To Generate SAN Certificate From Internal Windows 2003 Certificate Authority? « TechOnTip Weblog said

June 6, 2011 at 2:16 pm

[...] How to create a SAN certificate signing request for IIS web server? [...]

Reply
3.

How To Configure/Import SAN Certificate In IIS 7.X? « TechOnTip Weblog said

June 6, 2011 at 2:20 pm

[...] How to create a SAN certificate signing request for IIS web server? [...]

Reply
4.

DNS Port said

October 2, 2011 at 5:37 pm

DNS...

[...]How to create a SAN certificate signing request for IIS web server? « TechOnTip Weblog[...]

Reply
5.

Internet said

October 9, 2011 at 6:52 pm

hosting...

[...]How to create a SAN certificate signing request for IIS web server? « TechOnTip Weblog[...]


Reply
6.

Self Signed SSL Certificate In IIS 6 (Windows Server 2003) « Fraction Of The Blogosphere said

December 22, 2011 at 12:45 pm

[...] SAN Cert/Custom Request, <https://techontip.wordpress.com/2011/06/06/how-to-create-a-san-certificate-signing-request-for-iis-we...> LD_AddCustomAttr("AdOpt", "1"); LD_AddCustomAttr("Origin", "other"); [...]

Reply



7.

Siti Web Gratis said

May 8, 2012 at 2:26 pm

Siti web gratis...

[...]How to create a SAN certificate signing request for IIS web server? « TechOnTip Weblog[...]

Reply

8.

Self-Sign Certificates In Windows 2008 R2 « TechOnTip Weblog said

September 5, 2012 at 3:36 pm

[...] you want to know how to generate SAN certificate read this [...]

Reply

9.

Mario said

October 9, 2012 at 7:44 am

Hi!
And how will i process the answer to this CSR ?

Kind regards
Mario

Reply

Zoltan said

October 30, 2012 at 2:45 am

Mario,
Simply import the response into the very same certificate store folder were you have started the CSR generation.

Reply



10. **Wordpress Theme Review said**

December 4, 2012 at 11:42 am

This is very interesting, You are a very skilled blogger. I have joined your feed and look forward to seeking more of your excellent post. Also, I have shared your website in my social networks!

[Reply](#)11. **Tod said**

January 21, 2013 at 5:15 am

I go to see everyday some web pages and blogs to read posts, but this blog offers feature based content.

[Reply](#)**Brajesh Panda said**

January 24, 2013 at 10:03 am

Thank you Tod for inspiring words.

[Reply](#)12. **Creating A Blog said**

March 5, 2013 at 8:05 am

Just wish to say your article is as astonishing. The clearness to your post is just nice and that i could assume you're knowledgeable in this subject. Well along with your permission allow me to take hold of your RSS feed to keep updated with imminent post. Thank you a million and please continue the rewarding work.

[Reply](#)13. **How Do I Make A Website said**

March 10, 2013 at 4:58 pm

Hi there, just became alert to your blog through Google, and found that it's really informative. I am gonna watch out for brussels. I will be grateful if you continue this in future. A lot of people will be benefited from your writing. Cheers!

[Reply](#)14. **At Work said**

April 9, 2013 at 9:03 pm

I was pretty pleased to discover this page. I need to to thank you for your time due to this fantastic read!! I definitely savored every little bit of it and I have you book marked to look at new stuff on your website.

[Reply](#)15. **Ann Arbor Michigan said**

May 14, 2013 at 7:45 pm

There are many people moving on with the art of photography in the right manner. The mini spy pen camera is available in 4GB, 8GB and 16 GB for regular use as per requirement of the customer. There are a lot of options in mobile phones available on the market today.

[Reply](#)16. **Increase Views Youtube said**

July 20, 2013 at 6:09 am

It is not my first time to pay a quick visit this web site, i am visiting this web site dailly and get fastidious facts from here everyday.

[Reply](#)17. **Rozliczenie Pit Program said**

July 25, 2013 at 11:45 am

Hello I am so grateful I found your web site, I really found you by mistake, while I was researching on Bing for something else, Anyhow I am here now and would just like to say thank you for a marvelous post and a all round enjoyable blog (I also love the theme/design), I don't have time to read through it all at the minute but I have saved it and also added in your RSS feeds, so when I have time I will be back to read a great deal more, Please do keep up the great work.

[Reply](#)18. **Www.Youtube.Com said**

July 29, 2013 at 11:52 pm

You can make use of flax meal, almond meal, soy powder, etc.

[Reply](#)19. **How Do You Tag Yourself In Someone's Photo On Facebook said**

August 6, 2013 at 11:06 pm




All you have to do is to choose a relevant subject, learn composition and choose a stock photo website. This beginner photography article on common abbreviations and acronyms will help you understand popular photography terms and direct you to helpful articles for a deeper look. The scientific background of photography shows that the use of it for exploring the natural world was exploited by big businesses.

[Reply](#)20. **Brendan said**

September 15, 2013 at 7:03 pm

Thank you, this was incredibly helpful and exactly what I was looking for.

[Reply](#)

21. **Sapgenpse Get_pse For Two CN (SAN Certificate) | SES said**
 December 12, 2013 at 5:50 am
 [...] <https://techontip.wordpress.com/2011/06/06/how-to-create-a-san-certificate-signing-request-for-iis-we…> [...] [Reply](#)
22. **Andreas said**
 March 25, 2014 at 10:26 am
 Thank you, this was really helpful - especially the screenshots 😊 
[Reply](#)
23. **Glahens said**
 September 15, 2014 at 4:30 pm
 Very helpful. Only site from Google search that helped. One important item left off of these instructions is that when doing this that you should also add O, OU, Locality(L), State and Country in the Subject Name section when using these certificates for SSL sites where you are going to ask a CA to sign the certificate.. Made this mistake the first time around. 😊 
[Reply](#)
- Brajesh Panda said**
 May 2, 2016 at 9:20 am
 Thanks
[Reply](#)
24. **Wwe.Com 2011 said**
 September 23, 2014 at 5:17 pm
wwe.com 2011
 How to create a SAN certificate signing request for IIS web server? « TechOnTip Weblog
[Reply](#)
25. **Seeking Love said**
 September 25, 2014 at 7:56 am
 Thanks very interesting blog! 
[Reply](#)
26. **Resume Docket Review said**
 October 29, 2014 at 11:49 pm
resume docket review
 How to create a SAN certificate signing request for IIS web server? « TechOnTip Weblog
[Reply](#)
27. **Msebko said**
 November 3, 2014 at 12:29 am
 How to create a SAN certificate signing request for IIS web server?
 Answer:
 - After last step open IIS management console, click server name and then on Server Certificates
 - on the right pane click on complete certificate request
 - paste generated request and enter friendly name - will show in IIS certificate store
 - assign certificate to the https protocol binding:
 1. create first https binding:
 appcmd set site /site.name:"IIS_site1_name" /+bindings.[protocol='https',bindingInformation='ipaddress:443:firstDNSName']
 2. create second https binding:
 appcmd set site /site.name:"IIS_site2_name" /+bindings.[protocol='https',bindingInformation='ipaddress:443:secondDNSName']
 3. assign certificate to the IP and port 443:
 netsh http add sslcert ipport=ipaddress:443 certhash=(thumbprint of imported certificate without spaces) appid={random guid code}
 Thats it !
[Reply](#)
- Brajesh Panda said**
 May 2, 2016 at 9:19 am
 Thanks good notes with appcmd. Good for my scripts.
[Reply](#)
28. **Machine A Sous Banditisme said**
 November 11, 2014 at 4:00 pm
machine a sous banditisme
 How to create a SAN certificate signing request for IIS web server? « TechOnTip Weblog
[Reply](#)
29. **Machine A Sou Pour Le Fun said**
 November 11, 2014 at 10:35 pm
machine a sou pour le fun
 How to create a SAN certificate signing request for IIS web server? « TechOnTip Weblog
[Reply](#)
30. **How To Create A SAN Certificate Signing Request For IIS Web Server? « TechOnTip Weblog | Maksimusprime said**
 April 29, 2015 at 10:25 am
 [...] [oPrint](#) [...] [Reply](#)

31.

Pete Worthen said

July 22, 2015 at 2:36 pm

Dangit, we'd like an edit button.

Reply




32.

Sue said

April 13, 2016 at 2:38 am

I followed this steps but I could not key in the Distinguished Name Properties. Or I can key in Distinguished Name Properties but I could not add multiple domain SAN. There is no options. How do I do both and generate the CSR?

Reply




Brajesh Panda said

May 2, 2016 at 9:22 am

Not sure about the DN you are talking.

Reply



33.

How To Create A Web Server Using Iis | How Find Money said

May 12, 2016 at 6:30 am

[...] How to create a SAN certificate signing request for IIS ... - Jun 06, 2011 · How to create a SAN certificate signing request for IIS web server? Posted by Brajesh Panda on June 6, 2011 [...]

Reply

34.

How To Create A Csr In Iis 7.5 | Ho My God said

June 17, 2016 at 5:46 pm

[...] How to create a SAN certificate signing request for IIS ... - Jun 06, 2011 · How to create a SAN certificate signing request for IIS web server? Posted by Brajesh Panda on June 6, 2011 [...]

Reply

Leave a Reply

Enter your comment here...